

SYLVANIA



Leading in performance and design

ToLEDo™ Tubes

A comprehensive range of high performance, top quality and easy to install LED tubes for professional and DIY applications.



sylvania-lighting.com

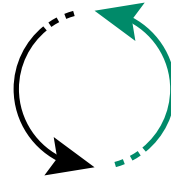
Why choose Sylvania LED lamps?

The high level of technology in our lamps means that you can confidently replace old technology with the latest LED retrofit lamps for general lighting purposes. Sylvania thrives to satisfy customers by replacing traditional lamps with LED, maintaining the light level and comfort they are used to, and achieving huge energy savings.

Our performance is best in class, making it easier for customers to make the best choice in the market and take no risks on safety or quality.

Switching to LED lamps offers many advantages:

- They match the shape and size of a fluorescent lamp, ensuring they can retrofit all luminaires
- Easy and safe replacement for fluorescent tubes without any rewiring required
- Available in popular T8 and T5 lengths with a wide range of lumen options
- Up to 75,000 hours average rated lifetime – lasts 3.5 times longer than standard fluorescent tri-phosphor lamps
- Up to 66% energy saving compared to fluorescent tubes
- Best-in-class lumen efficacy - up to 185 lm/W
- Omni-directional light distribution
- Available in 3000K, 4000K and 6500K colour temperatures
- B to E energy class, offering up to 90% energy savings
- Comes with up to 5 years standard warranty, for complete peace of mind
- High switching cycles - 200,000X
- Ideal for factories, car parks, supermarkets, department stores, schools and offices



Direct replacement



Last 3 times longer than fluorescent tubes



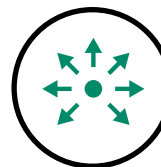
Up to 5 Years Warranty

WARRANTY

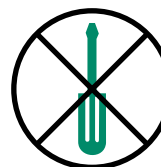


Up to 200,000X switching cycles

200 000x



Omni-directional light distribution



No rewiring of luminaires

Range overview

LED T5 Tubes



CCG	ECG	AC
X	✓	X

ToLEDo™ Superia T5 ECG

- Ideal solution to replace conventional T5 lamps
- Works with compatible T5 electronic HF ballast
- 50,000H average rated life
- Available in 1149mm and 1449mm in HO and HE version
- Lumen efficacy: up to 157 lm/W
- 5 year warranty



CCG	ECG	AC
X	X	✓

ToLEDo™ Superia T5 AC

- Mains voltage LED T5 solution
- Works with direct mains AC 220-240V
- 50,000H average rated life
- Available in 1149mm and 1449mm in HO and HE version
- Lumen efficacy: up to 151 lm/W
- 5 year warranty

LED T8 Tubes



CCG	ECG	AC
✓	✓	✓

ToLEDo™ Superia T8 Universal

- LED T8 3-in-1 solution
- Works with compatible T8 electronic HF ballast, magnetic/CCG ballast and also, suitable for direct mains operation (AC 220-240V)
- 50,000H average rated life
- Available in 600mm, 1200mm and 1500mm lengths
- Lumen efficacy: up to 150 lm/W
- 5 year warranty



CCG	ECG	AC
✓	✓	✓

ToLEDo™ T8 Universal

- LED T8 entry-level 3-in-1 solution
- Works with compatible T8 electronic HF ballast, magnetic/CCG ballast and also, suitable for direct mains operation (AC 220-240V)
- 30,000H average rated life
- Available in 1200mm and 1500mm lengths
- Lumen efficacy: up to 117 lm/W
- 3 year warranty



CCG	ECG	AC
✓	X	✓

ToLEDo™ Superia T8 CCG and AC

- Compatible with magnetic/ CCG ballast only
- Suitable for direct mains operation (AC 220-240V)
- 75,000H average rated life
- Available in 1200mm and 1500mm lengths
- Lumen efficacy: up to 185 lm/W
- 5 year warranty



CCG	ECG	AC
✓	X	✓

ToLEDo™ AVANT T8 CCG and AC

- Compatible with magnetic/ CCG ballast only
- Suitable for direct mains operation (AC 220-240V)
- 50,000H average rated life
- Available in standard 600mm, 1200mm and 1500mm, and special 451mm, 734mm, 908mm, 984mm, 1061 and 1800mm lengths
- Lumen efficacy: 150 lm/W
- 5 year warranty



CCG	ECG	AC
✓	X	✓

ToLEDo™ NEOS T8 CCG and AC

- Compatible with magnetic/ CCG ballast only
- Suitable for direct mains operation (AC 220-240V)
- 30,000H average rated life
- Available in 600mm, 1200mm and 1500mm lengths
- Lumen efficacy: up to 136 lm/W
- 3 year warranty



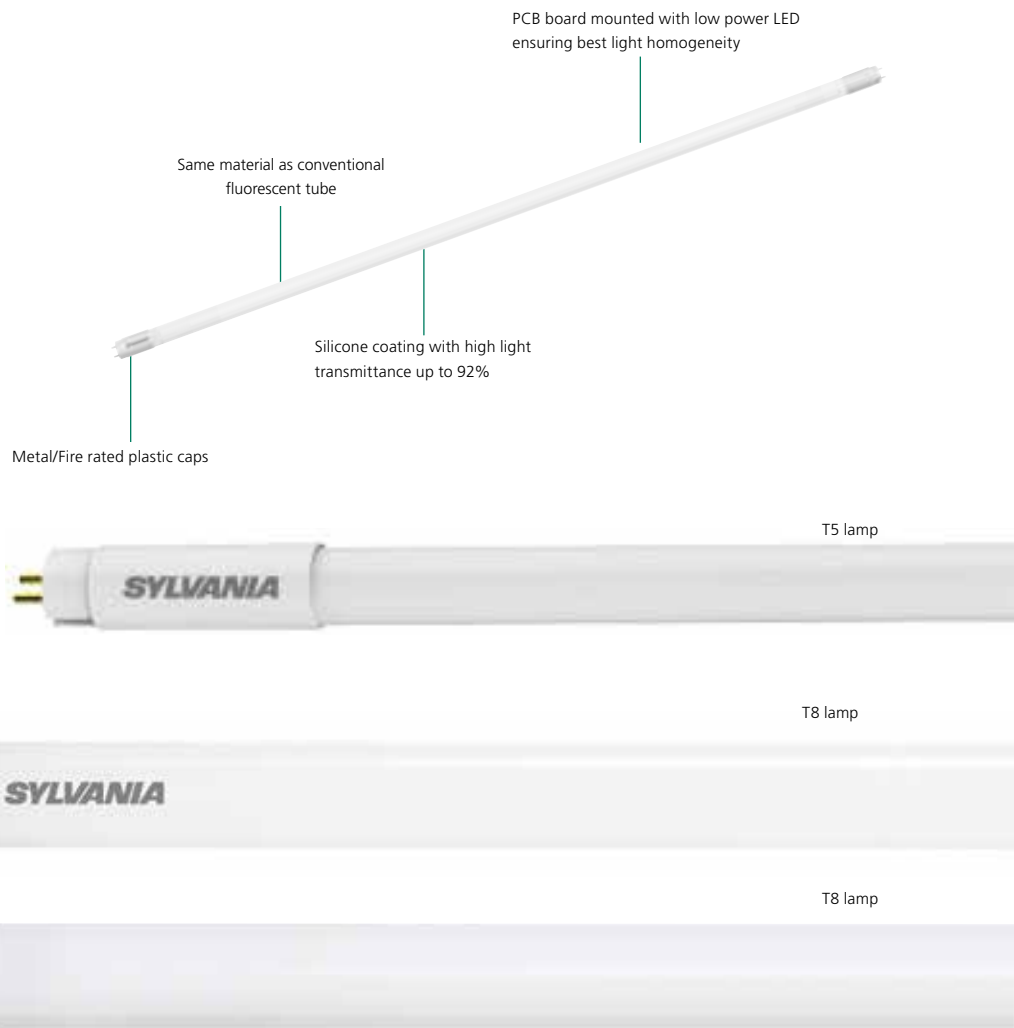
Construction of ToLEDo™

T8 / T5 tubes

The ToLEDo range is designed with the same construction as traditional fluorescent lamp, enabling to achieve wide light distribution and beam angle, therefore making it more suitable as a replacement lamp for conventional luminaires.

Advantages:

- Superb uniformity and light transmittance
- Benefit from wide light distribution angle
- Wide beam angle
- No bending
- No ageing and discolouration over time
- No dark spots
- Lightweight
- Reminiscent look of fluorescent tubes



ToLEDo™ Superia T5 ECG



The high-performance LED T5 solution is designed to work with electronic high-frequency ballast, making it a quick, easy and safe replacement for fluorescent tubes without any rewiring required.

Ideal for factories, car parks, supermarkets, department stores, schools and offices.

Features

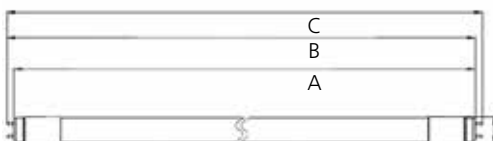
- 50,000 hours average rated lifetime – lasts 2.5 times longer than standard fluorescent tri-phosphor T5 lamps
- Available in 562mm, 862mm, 1149mm and 1449mm lengths in both HO and HE version
- High switching cycles – 200,000X
- Up to 54% energy saving compared to the standard T5 lamp
- High lumen efficacy - up to 156lm/W
- Omni-directional light distribution and wide beam angle
- Minimum and maximum operating temperature: -20°C to 50°C
- Colour temperature: 4000K and 6500K
- Glass construction and polycarbonate end-caps
- Not suitable for direct mains (AC 220-240V) or magnetic/ CCG ballast
- Works only with compatible electronic ballasts. Please refer to Sylvania website for full list of compatible ballasts

Product information

Code	Description	Voltage (V)	Power (W)	Luminous Flux (lm)	Efficiency	Colour Temp (K)	Base	Finish	Suitable Replacement (W)	Life (h)	Dimmable (Y/N)	Energy Class	Packaging Qty
ToLEDo™ Superia T5 ECG Non-Dimmable													
562mm*													
0029261	ToLEDo Superia T5 ECG HE V3 2FT 1000lm 840	40-70	7	1100	143	4000	G5	Frosted	14	50,000	N	E	10
862mm*													
0029262	ToLEDo Superia T5 ECG HE V3 3FT 1500lm 840	50-80	10	1500	150	4000	G5	Frosted	21	50,000	N	D	10
1162mm													
0029263	ToLEDo Superia T5 ECG HE V3 4FT 2400lm 840	100-130	17	2400	141	4000	G5	Frosted	28	50,000	N	E	10
0029264	ToLEDo Superia T5 ECG HE V3 4FT 2400lm 865	100-130	17	2400	141	6500	G5	Frosted	28	50,000	N	E	10
0029265	ToLEDo Superia T5 ECG HO V3 4FT 4000lm 840	40-70	27	4000	148	4000	G5	Frosted	54	50,000	N	D	10
0029266	ToLEDo Superia T5 ECG HO V3 4FT 4000lm 865	40-70	27	4000	148	6500	G5	Frosted	54	50,000	N	D	10
1462mm													
0029267	ToLEDo Superia T5 ECG HE V3 5FT 2800lm 840	105-150	18	2800	156	4000	G5	Frosted	35	50,000	N	D	10
0029268	ToLEDo Superia T5 ECG HE V3 5FT 2800lm 865	105-150	18	2800	156	6500	G5	Frosted	35	50,000	N	D	10
0029269	ToLEDo Superia T5 ECG HO V3 5FT 3900lm 840	80-110	26	3900	150	4000	G5	Frosted	49	50,000	N	D	10
0029270	ToLEDo Superia T5 ECG HO V3 5FT 3900lm 865	80-110	26	3900	150	6500	G5	Frosted	49	50,000	N	D	10
0029271	ToLEDo Superia T5 ECG HO V3 5FT 5600lm 840	60-90	37	5600	151	4000	G5	Frosted	80	50,000	N	D	10
0029272	ToLEDo Superia T5 ECG HO V3 5FT 5600lm 865	60-90	37	5600	151	6500	G5	Frosted	80	50,000	N	D	10

* Made to order

Dimensions (mm)



Max length	A	B	C
2ft	548	555	562
3ft	848	855	862
4ft	1148	1155	1162
5ft	1448	1455	1462

Images



ToLEDo™ Superia T5 AC



LED T5 solution for direct mains AC 220-240V operation.
 Quick, easy and safe replacement for fluorescent T5 tubes.
 Not suitable for operation with electronic/ECG ballast.
 Ideal for factories, car parks, supermarkets, department stores, schools and offices.

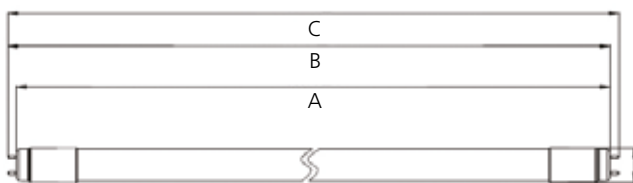
Features

- 50,000 hours average rated lifetime – lasts 2.5 times longer than standard fluorescent tri-phosphor T5 lamps
- Available in 1149mm and 1449mm lengths in both HO and HE version
- High switching cycles – 200,000X
- Up to 54% energy saving compared to the standard T5 lamp
- High lumen efficacy - up to 151lm/W
- Omni-directional light distribution and wide beam angle
- Minimum and maximum operating temperature: -20°C to 50°C
- Colour temperature: 4000K
- Glass construction and polycarbonate end-caps
- Suitable for direct mains (AC 220-240V)
- Not suitable for operation with electronic/ECG or magnetic/ CCG ballast

Product information

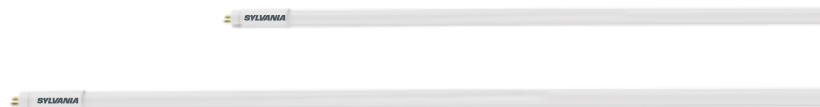
Code	Description	Voltage (V)	Power (W)	Luminous Flux (lm)	Efficiency	Colour Temp (K)	Base	Finish	Suitable Replacement (W)	Life (h)	Dimmable (Y/N)	Energy Class	Packaging Qty
ToLEDo™ Superia T5 AC Non-Dimmable													
1200mm													
0029256	ToLEDo Superia T5 AC V2 4FT 2400lm 840	220-240	16	2400	150	4000	G5	Frosted	28	50,000	N	D	10
0029257	ToLEDo Superia T5 AC V2 4FT 3900lm 840	220-240	26	3900	150	4000	G5	Frosted	54	50,000	N	D	10
1500mm													
0029258	ToLEDo Superia T5 AC V2 5FT 2800lm 840	220-240	18.5	2800	151	4000	G5	Frosted	35	50,000	N	D	10
0029259	ToLEDo Superia T5 AC V2 5FT 3900lm 840	220-240	26	3900	150	4000	G5	Frosted	49	50,000	N	D	10
0029260	ToLEDo Superia T5 AC V2 5FT 5600lm 840	220-240	37	5600	151	4000	G5	Frosted	80	50,000	N	D	10

Dimensions (mm)

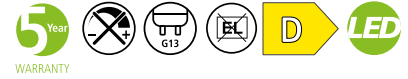


Max length	A	B	C
4ft	1148	1155	1162
5ft	1448	1455	1462

Images



ToLEDo™ Superia T8 Universal



The high-performance universal LED T8 solution is designed to work with both magnetic and electronic HF ballast, making it a quick, easy and safe replacement for fluorescent tubes without any rewiring required.

ToLEDo T8 Superia Universal is suitable for direct mains operation (AC 220-240V).

Ideal for factories, car parks, supermarkets, department stores, schools and offices.

Features

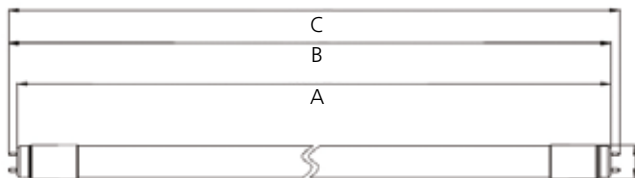
- 60,000 hours average rated life – last 2.5 times longer than standard fluorescent T8 tri-phosphor lamp
- Available in 600mm, 1200mm and 1500mm lengths
- High switching cycles – 200,000X
- Up to 59% energy savings compared to the standard fluorescent lamp
- High lumen efficacy – up to 157lm/W
- Omni-directional light distribution and wide beam angle
- Minimum and maximum operating temperature : -20°C to 50°C
- Colour temperature: 4000K and 6500K
- Glass construction and polycarbonate end-caps
- Must replace the fluorescent starter with LED dummy starter when used with magnetic/ CCG ballast
- Works only with compatible electronic ballasts. Please refer to Sylvania website for full list of compatible ballasts

Product information

Code	Description	Voltage (V)	Power (W)	Luminous Flux (lm)	Efficiency	Colour Temp (K)	Base	Finish	Suitable Replacement (W)	Life (h)	Dimmable (Y/N)	Energy Class	Packaging Qty
ToLEDo™ T8 Universal Non-Dimmable													
600mm													
0029273	ToLEDo Superia T8 UNI V3 2FT 1100lm 840	220-240	7.5	1100	147	4000	G13	Frosted	18	50,000	N	D	10
0029274	ToLEDo Superia T8 UNI V3 2FT 1100lm 865	220-240	7.5	1100	147	6500	G13	Frosted	18	50,000	N	D	10
1200mm													
0029275	ToLEDo Superia T8 UNI V3 4FT 2400lm 840	220-240	16	2400	150	4000	G13	Frosted	36	50,000	N	D	10
0029276	ToLEDo Superia T8 UNI V3 4FT 2400lm 865	220-240	16	2400	150	6500	G13	Frosted	36	50,000	N	D	10
1500mm													
0029277	ToLEDo Superia T8 UNI V3 5FT 3600lm 840	220-240	23	3600	157	4000	G13	Frosted	58	50,000	N	D	10
0029278	ToLEDo Superia T8 UNI V3 5FT 3600lm 865	220-240	23	3600	157	6500	G13	Frosted	58	50,000	N	D	10

*Made to order

Dimensions (mm)

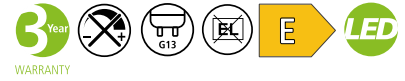


Max length	A	B	C
2FT	589	596	603
4FT	1198	1206	1213
5FT	1499	1506	1514

Images



ToLEDo™ T8 Universal



The entry-level universal LED T8 solution is designed to work with both magnetic and electronic HF ballast, making it a quick, easy and safe replacement for fluorescent tubes without any rewiring required.

ToLEDo T8 Universal is suitable for direct mains operation (AC 220-240V). Ideal for factories, car parks, supermarkets, department stores, schools and office.

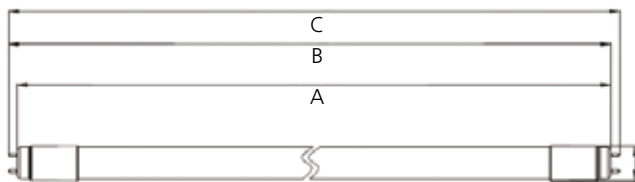
Features

- 30,000 hours average rated life – last 1.5 times longer than standard fluorescent T8 tri-phosphor lamp
- Available in 1200mm and 1500mm lengths
- High switching cycles – 200,000X
- Up to 59% energy savings compared to the standard fluorescent lamp
- High lumen efficacy – up to 117lm/W
- Omni-directional light distribution and wide beam angle
- Minimum and maximum operating temperature: -20°C to 50°C
- Colour temperature: 4000K and 6500K
- Glass construction and polycarbonate end-caps
- Must replace the fluorescent starter with LED dummy starter when used with magnetic/ CCG ballast
- Works only with compatible electronic ballasts. Please refer to Sylvania website for full list of compatible ballasts

Product information

Code	Description	Voltage (V)	Power (W)	Luminous Flux (lm)	Efficiency	Colour Temp (K)	Base	Finish	Suitable Replacement (W)	Life (h)	Dimmable (Y/N)	Energy Class	Packaging Qty
ToLEDo™ T8 Universal Non-Dimmable													
1200mm													
0029279	ToLEDo T8 UNI V2 4FT 2000lm 840 RL	220-240	18	2000	111	4000	G13	Frosted	36	30,000	N	E	1
0029280	ToLEDo T8 UNI V2 4FT 2000lm 865 RL	220-240	18	2000	111	6500	G13	Frosted	36	30,000	N	E	1
1500mm													
0029281	ToLEDo T8 UNI V2 5FT 2800lm 840 RL	220-240	24	2800	117	4000	G13	Frosted	58	30,000	N	E	1
0029282	ToLEDo T8 UNI V2 5FT 2800lm 865 RL	220-240	24	2800	117	6500	G13	Frosted	58	30,000	N	E	1

Dimensions (mm)



Max length	A	B	C
4FT	1198	1206	1213
5FT	1499	1506	1513

Additional Images



ToLEDo™ Superia T8 CCG/AC



The new ToLEDo Superia T8 range offer best-in-class lumen package and reaches up to 4100lm with up to 185lm/W, helping to dramatically reduce energy consumption and achieve quick payback on investment.

ToLEDo Superia T8 work magnetic ballast and also suitable for direct mains (AC 220-240V) operation.

Ideal for factories, warehouses, car parks, supermarkets, department stores, schools and offices.

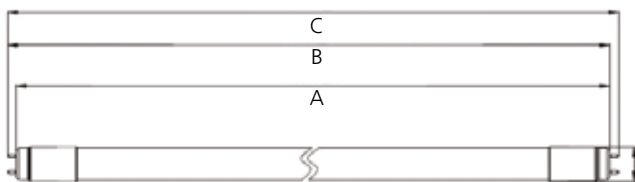
Features

- 75,000 hours average rated life - last more than 3.5 times longer than standard fluorescent T8 tri-phosphor lamp
- Available in 1200mm and 1500mm lengths
- High switching cycles - 200,000X
- High lumen package - up to 4100lm
- High lumen efficacy - up to 185lm/W
- Better uniformity and light transmittance - no dark spots
- Minimum and maximum operating temperature: -20°C to 55°C
- Colour temperature: 3000K, 4000K and 6500K
- Same construction and design as traditional fluorescent lamps - glass housing and metal end-caps
- Not suitable for operation with electronic/ECG ballast
- Suitable for direct mains operation (AC 220-240V)
- Must replace the fluorescent starter with LED dummy starter when operated with magnetic/ CCG ballast

Product information

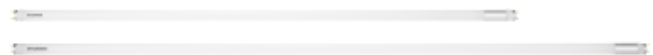
Code	Description	Voltage (V)	Power (W)	Luminous Flux (lm)	Efficiency	Colour Temp (K)	Base	Finish	Suitable Replacement (W)	Life (h)	Dimmable (Y/N)	Energy Class	Packaging Qty
ToLEDo™ Superia T8 CCG/AC Non-Dimmable													
1200mm													
0030245	ToLEDo Superia T8 CCG L1200 2760lm 830 75K PET SL	220-240	16.8	2760	164	3000	G13	Frosted	36	75,000	N	C	10
0030246	ToLEDo Superia T8 CCG L1200 3100lm 840 75K PET SL	220-240	16.8	3100	185	4000	G13	Frosted	36	75,000	N	B	10
0030247	ToLEDo Superia T8 CCG L1200 3100lm 865 75K PET SL	220-240	16.8	3100	185	6500	G13	Frosted	36	75,000	N	B	10
1500mm													
0030248	ToLEDo Superia T8 CCG L1500 3850lm 830 75K PET SL	220-240	22.2	3850	173	3000	G13	Frosted	58	75,000	N	C	10
0030249	ToLEDo Superia T8 CCG L1500 4100lm 840 75K PET SL	220-240	22.2	4100	185	4000	G13	Frosted	58	75,000	N	B	10
0030250	ToLEDo Superia T8 CCG L1500 4100lm 865 75K PET SL	220-240	22.2	4100	185	6500	G13	Frosted	58	75,000	N	B	10

Dimensions (mm)



Max length	A	B	C
1200mm	1199	1206	1214
1500mm	1500	1507	1514

Additional Images



ToLEDo™ AVANT T8 CCG/AC



ToLEDo AVANT T8 reaches up to 3150lm with 150 lm/W, perfect for customers looking for high-quality and energy efficient LED solution to replace conventional fluorescent T8 lamps. High switching cycles and 50,000 hours lifespan keeps maintenance cost low and gives complete peace of mind to customers.

ToLEDo AVANT T8 works magnetic ballast and also suitable for direct mains (AC 220-240V) operation.

Ideal for factories, warehouses, car parks, supermarkets, department stores, schools and offices.

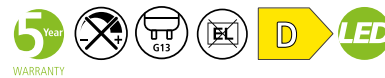
Features

- 50,000 hours average rated life - last 2 times longer than standard fluorescent T8 tri-phosphor lamp
- Available in standard 600mm, 1200mm and 1500mm, and special 451mm, 734mm, 908mm, 984mm, 1061 and 1800mm lengths
- High switching cycles - 200,000X
- High lumen efficacy - 150lm/W
- Omni-directional light distribution and wide beam angle
- Minimum and maximum operating temperature: -20°C to 55°C
- Colour temperature: 3000K, 4000K and 6500K
- Same construction and design as traditional fluorescent lamps - glass housing and metal end-caps
- Not suitable for operation with electronic/ECG ballast
- Suitable for direct mains operation (AC 220-240V)
- Must replace the fluorescent starter with LED dummy starter when operated with magnetic/CCG ballast

Product information

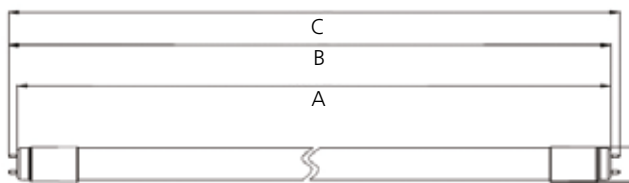
Code	Description	Voltage (V)	Power (W)	Luminous Flux (lm)	Efficiency	Colour Temp (K)	Base	Finish	Suitable Replacement (W)	Life (h)	Dimmable (Y/N)	Energy Class	Packaging Qty
ToLEDo™ AVANT T8 CCG/AC Non-Dimmable													
451mm													
0030285	ToLEDo AVANT T8 CCG L451 950LM 830 50K RL	220-240	6.3	950	150	3000	G13	Frosted	N/A	50,000	N	D	10
0030256	ToLEDo AVANT T8 CCG L451 950LM 840 50K RL	220-240	6.3	950	150	4000	G13	Frosted	N/A	50,000	N	D	10
0030286	ToLEDo AVANT T8 CCG L451 950LM 865 50K RL	220-240	6.3	950	150	6500	G13	Frosted	N/A	50,000	N	D	10
600mm													
0030236	ToLEDo AVANT T8 CCG L600 1000LM 830 50K RL	220-240	6.6	1000	150	3000	G13	Frosted	18	50,000	N	D	10
0030237	ToLEDo AVANT T8 CCG L600 1000LM 840 50K RL	220-240	6.6	1000	150	4000	G13	Frosted	18	50,000	N	D	10
0030238	ToLEDo AVANT T8 CCG L600 1000LM 865 50K RL	220-240	6.6	1000	150	6500	G13	Frosted	18	50,000	N	D	10
734mm													
0030287	ToLEDo AVANT T8 CCG L734 1350LM 830 50K RL	220-240	9	1350	150	3000	G13	Frosted	N/A	50,000	N	D	10
0030257	ToLEDo AVANT T8 CCG L734 1350LM 840 50K RL	220-240	9	1350	150	4000	G13	Frosted	N/A	50,000	N	D	10
0030288	ToLEDo AVANT T8 CCG L734 1350LM 865 50K RL	220-240	9	1350	150	6500	G13	Frosted	N/A	50,000	N	D	10
908mm													
0030289	ToLEDo AVANT T8 CCG L908 1700LM 830 50K RL	220-240	11.3	1700	150	3000	G13	Frosted	N/A	50,000	N	D	10
0030258	ToLEDo AVANT T8 CCG L908 1700LM 840 50K RL	220-240	11.3	1700	150	4000	G13	Frosted	N/A	50,000	N	D	10
0030290	ToLEDo AVANT T8 CCG L908 1700LM 865 50K RL	220-240	11.3	1700	150	6500	G13	Frosted	N/A	50,000	N	D	10
984mm													
0030259	ToLEDo AVANT T8 CCG L984 1800LM 840 50K RL	220-240	12	1800	150	4000	G13	Frosted	N/A	50,000	N	D	10
1061mm													
0030260	ToLEDo AVANT T8 CCG L1061 2000LM 840 50K RL	220-240	13.3	2000	150	4000	G13	Frosted	N/A	50,000	N	D	10
1200mm													
0030239	ToLEDo AVANT T8 CCG L1200 2000LM 830 50K RL	220-240	13.3	2000	150	3000	G13	Frosted	36	50,000	N	D	10
0030240	ToLEDo AVANT T8 CCG L1200 2000LM 840 50K RL	220-240	13.3	2000	150	4000	G13	Frosted	36	50,000	N	D	10
0030241	ToLEDo AVANT T8 CCG L1200 2000LM 865 50K RL	220-240	13.3	2000	150	6500	G13	Frosted	36	50,000	N	D	10
1500mm													
0030242	ToLEDo AVANT T8 CCG L1500 2700LM 830 50K RL	220-240	18	2700	150	3000	G13	Frosted	58	50,000	N	D	10
0030243	ToLEDo AVANT T8 CCG L1500 2700LM 840 50K RL	220-240	18	2700	150	4000	G13	Frosted	58	50,000	N	D	10
0030244	ToLEDo AVANT T8 CCG L1500 2700LM 865 50K RL	220-240	18	2700	150	6500	G13	Frosted	58	50,000	N	D	10
1800mm													
0030295	ToLEDo AVANT T8 CCG L1800 3150LM 830 50K RL	220-240	21	3150	150	3000	G13	Frosted	N/A	50,000	N	D	10
0030261	ToLEDo AVANT T8 CCG L1800 3150LM 840 50K RL	220-240	21	3150	150	4000	G13	Frosted	N/A	50,000	N	D	10
0030296	ToLEDo AVANT T8 CCG L1800 3150LM 865 50K RL	220-240	21	3150	150	6500	G13	Frosted	N/A	50,000	N	D	10

ToLEDo™ AVANT T8 CCG/AC



Dimensions (mm)

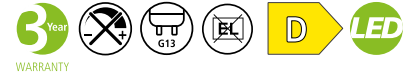
Max length	A	B	C
451mm	437	444	451
600mm	590	597	604
734mm	719	726	733
908mm	894	901	908
984mm	969	976	893
1061mm	1046	1053	1060
1200mm	1199	1206	1213
1500mm	1500	1507	1514
1800mm	1763	1770	1777



Images



ToLEDo™ T8 NEOS CCG/AC



The entry-level ToLEDo NEOS T8 range reaches up to 2300lm with 135 lm/W, perfect for customers looking for reliable energy efficient LED solution to replace conventional fluorescent T8 lamps.

ToLEDo NEOS T8 works with magnetic ballast and also suitable for direct mains (AC 220-240V) operation.

Ideal for factories, warehouses, car parks, supermarkets, department stores, schools and offices.

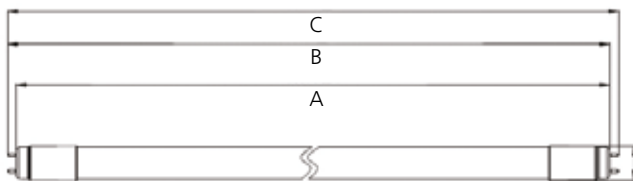
Features

- 30,000 hours average rated life - up to 66% reduction in power consumption compared to standard fluorescent T8 tri-phosphor lamp
- Available in 600mm, 1200mm and 1500mm lengths
- High switching cycles - 50,000X
- Good lumen efficacy - 135lm/W
- Omni-directional light distribution and wide beam angle
- Minimum and maximum operating temperature: -20°C to 55°C
- Colour temperature: 4000K and 6500K
- Same construction and design as traditional fluorescent lamps - glass housing and metal end-caps
- Not suitable for HF electronic ballast
- Suitable for direct mains operation (AC 220-240V)
- Must replace the fluorescent starter with LED dummy starter when operated with magnetic/CCG ballast

Product information

Code	Description	Voltage (V)	Power (W)	Luminous Flux (lm)	Efficiency	Colour Temp (K)	Base	Finish	Suitable Replacement (W)	Life (h)	Dimmable (Y/N)	Energy Class	Packaging Qty
ToLEDo™ NEOS T8 CCG/AC Non-Dimmable													
600mm													
0030230	ToLEDo NEOS T8 CCG L600 900lm 840 30K RL	220-240	6.6	900	136	4000	G13	Frosted	18	30,000	N	D	10
0030231	ToLEDo NEOS T8 CCG L600 900lm 865 30K RL	220-240	6.6	900	136	6500	G13	Frosted	18	30,000	N	D	10
1200mm													
0030232	ToLEDo NEOS T8 CCG L1200 1800lm 840 30K RL	220-240	13.3	1800	135	4000	G13	Frosted	36	30,000	N	D	10
0030233	ToLEDo NEOS T8 CCG L1200 1800lm 865 30K RL	220-240	13.3	1800	135	6500	G13	Frosted	36	30,000	N	D	10
1500mm													
0030234	ToLEDo NEOS T8 CCG L1500 2300lm 840 30K RL	220-240	17	2300	135	4000	G13	Frosted	58	30,000	N	D	10
0030235	ToLEDo NEOS T8 CCG L1500 2300lm 865 30K RL	220-240	17	2300	135	6500	G13	Frosted	58	30,000	N	D	10

Dimensions (mm)



Max length	A	B	C
600mm	590	597	604
1200mm	1199	1206	1213
1500mm	1500	1507	1514

Images



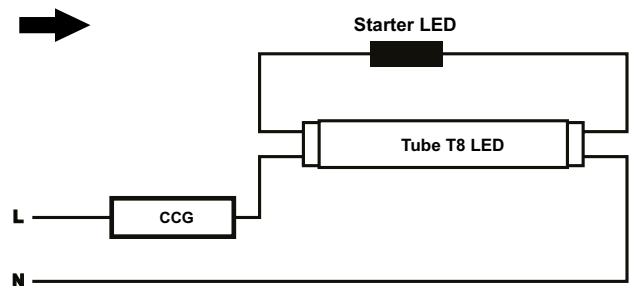
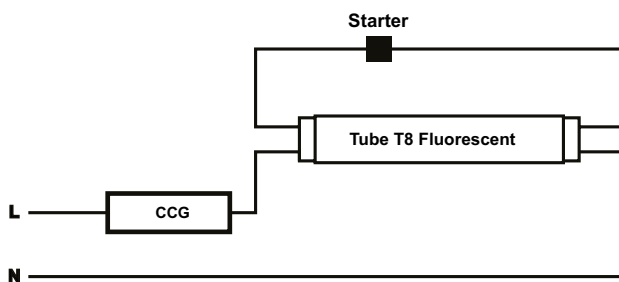
Installation instructions

ToLEDo™ Tubes T5 & T8

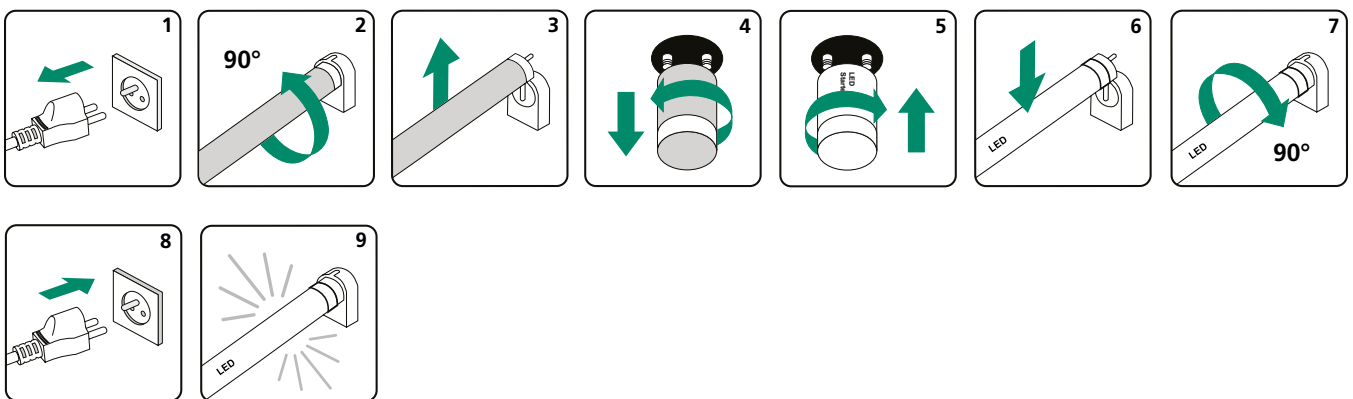
Magnetic/ CCG ballast

Compatible products:

- ToLEDo Superia T8 Universal V3
- ToLEDo T8 Universal V2
- ToLEDo Superia T8
- ToLEDo AVANT T8
- ToLEDo NEOS T8



Simple 9 step process: (Magnetic / CCG ballast)



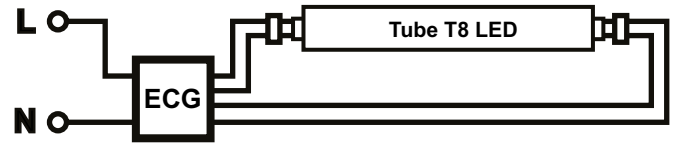
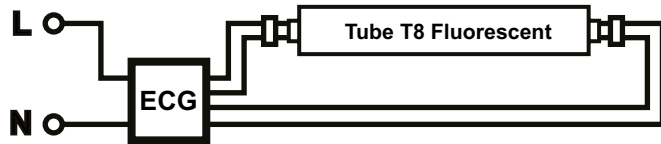
1. Turn off power
2. Rotate the tube 90° anti-clockwise
3. Remove the existing fluorescent lamp
4. Remove the existing fluorescent starter
5. Insert Sylvania LED starter into the existing fluorescent starter socket
6. Insert Sylvania LED T8 tube
7. Secure it in position by turning the tube 90° clockwise
8. Switch on the power supply
9. Check for proper operation

Electronic HF ballast

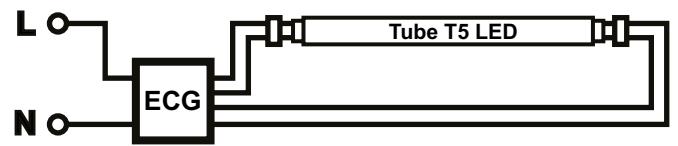
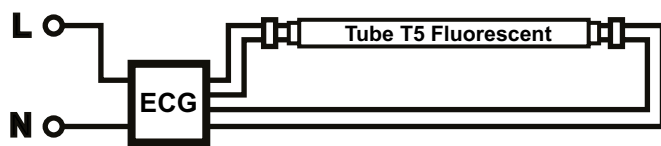
Compatible products:

- ToLEDo Superia T8 Universal V3
- ToLEDo T8 Universal V2
- ToLEDo Superia T5 ECG V3

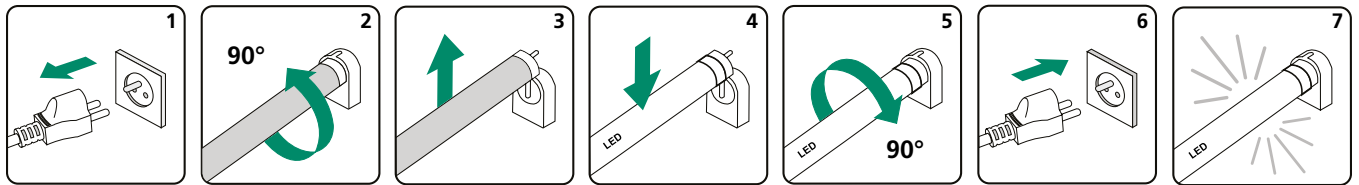
T8



T5



Simple 7 step process: (electronic ballast)



1. Turn off power
2. Rotate the tube 90° anti-clockwise
3. Remove the existing fluorescent lamp
4. Insert Sylvania LED T8 tube
5. Secure it in position by turning the tube 90° clockwise
6. Switch on the power supply
7. Check for proper operation

Installation instructions

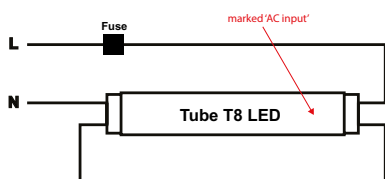
220-240V AC/Direct Mains

Compatible products:

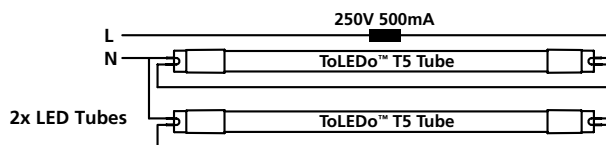
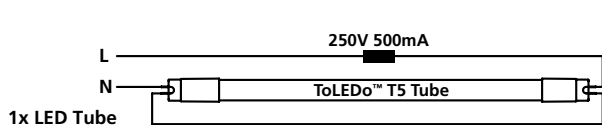
- ToLEDo Superia T5 AC V2
- ToLEDo Superia T8 Universal V3
- ToLEDo T8 Universal V2
- ToLEDo Superia T8
- ToLEDo AVANT T8
- ToLEDo NEOS T8

T8

Fig. 1

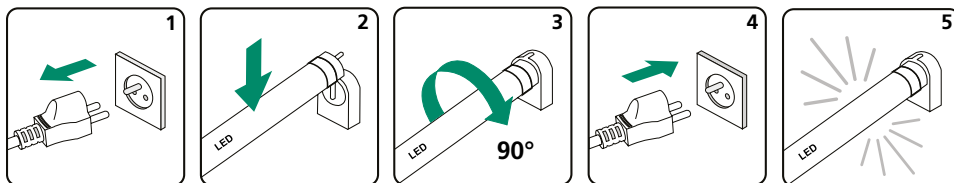


T5



Simple 5 step process: (220-240V AC)

Warning: The mains input side (marked 'AC Input' on the end-cap) should be facing the lamp holder with mains connection, otherwise the internal fuse of the tube could be damaged.



1. Turn off power
2. Insert Sylvania LED T8/T5 tube
3. Secure it in position by turning the tube 90° clockwise
4. Switch on the power supply
5. Check for proper operation

SYLVANIA



CE UK
CA



Although every effort has been made to ensure accuracy in the compilation of the technical detail within this publication, specifications and performance data are constantly changing. Current details should therefore be checked with Feilo Sylvania International Group Kft.

Copyright Feilo Sylvania International Group Kft. August 2023

sylvania-lighting.com

A Feilo Sylvania Company